
PARTNERSHIPS IN HOME-GROWN SCHOOL FEEDING PROGRAMS



ARLENE MITCHELL

HGSF WEBINAR

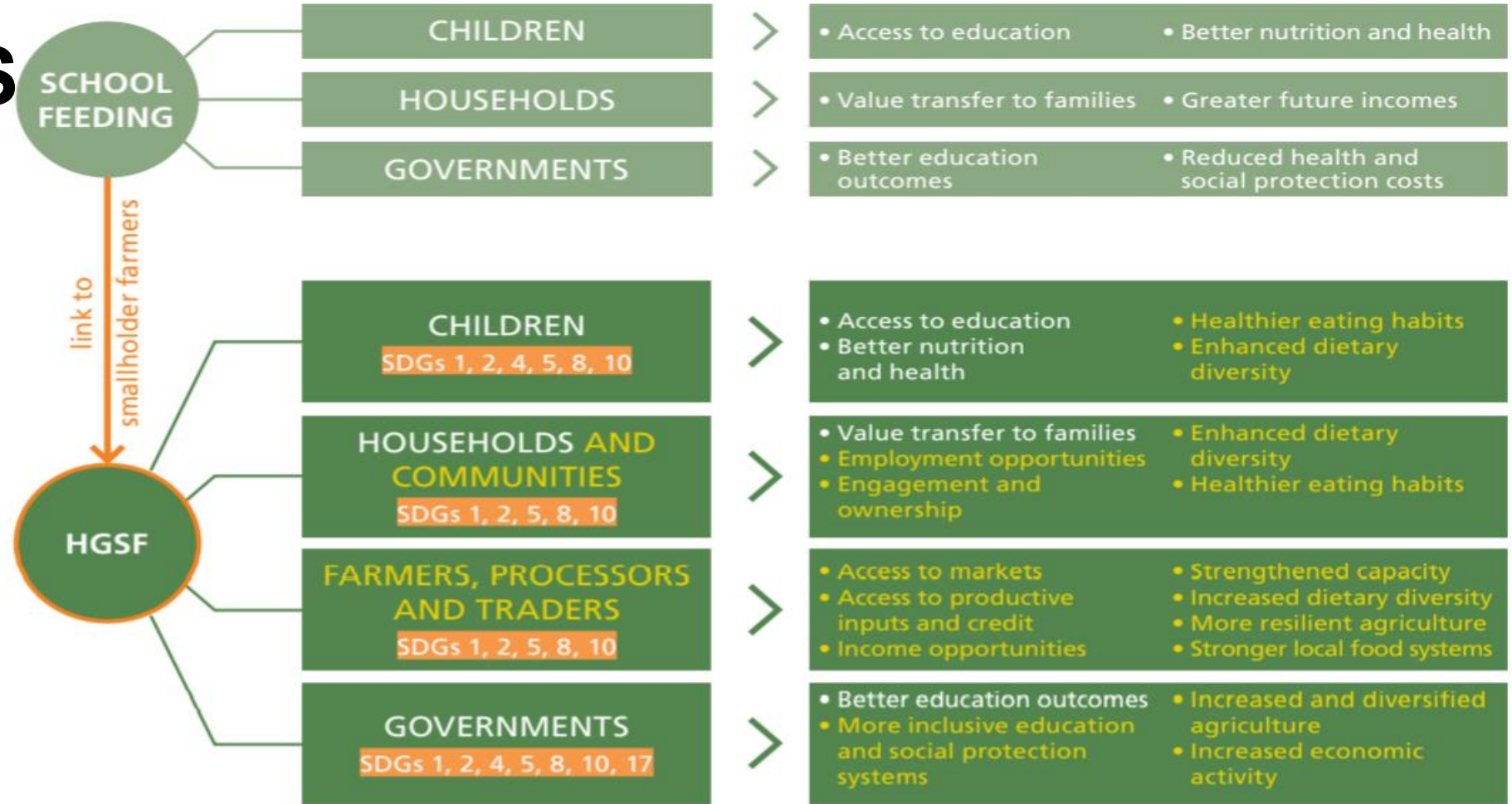
OCTOBER 21, 2020



FIGURE 1 Beneficiaries and potential benefits of school feeding and HGSF

HGSF PARTNERS

:



Identifying benefits to stakeholder



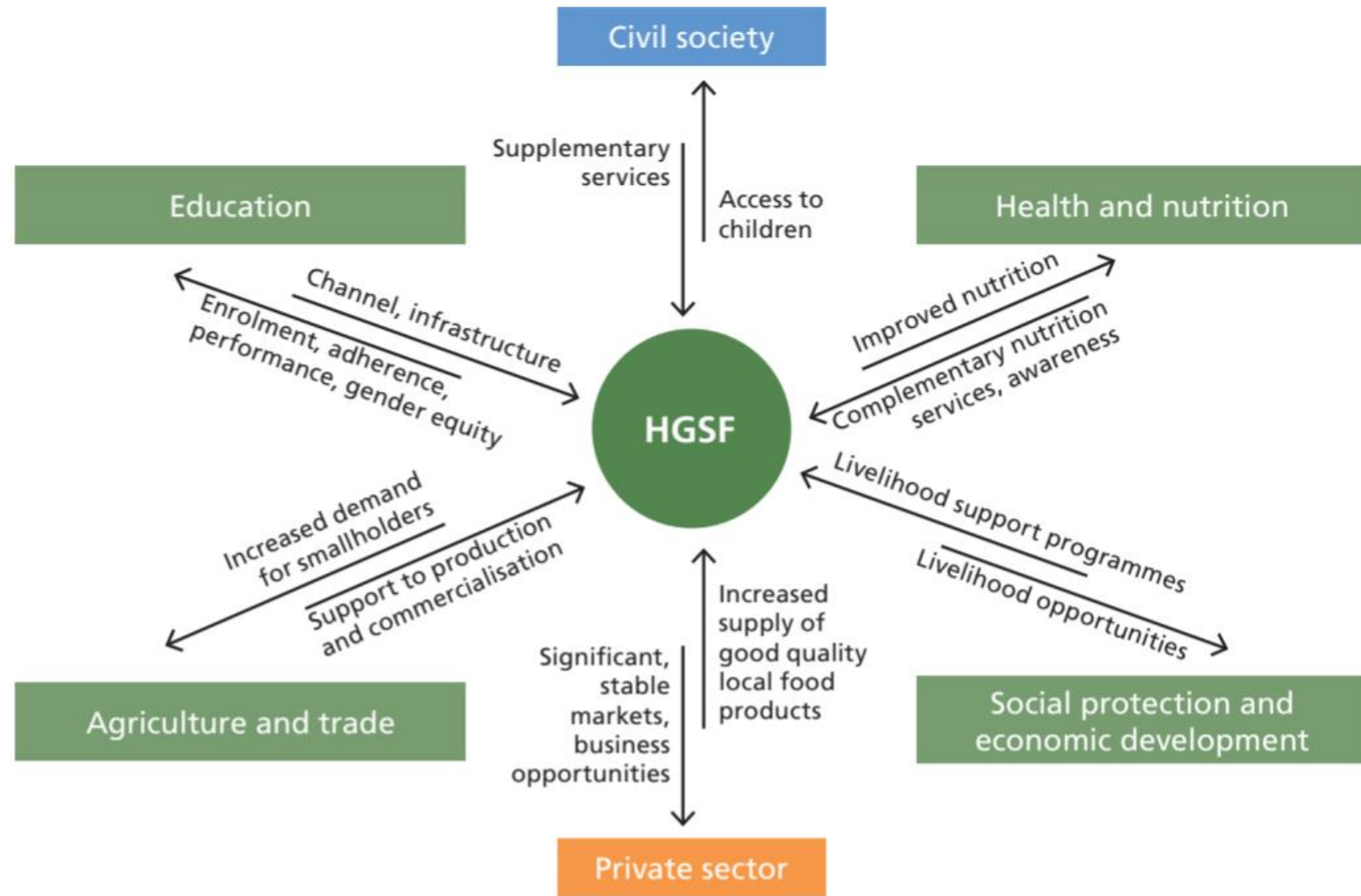
FAO, GCNF, IFAD, NEPAD, PCD, WFP, 2018. Home-Grown School Feeding. Resource Framework

HGSF PARTNERS

:

Identifying benefits to both programs and to stakeholder

FIGURE 2 How HGSF can contribute to and benefit from different sectors



SOME CHARACTERISTICS OF SUSTAINABLE PROGRAMS

- CLEAR GOAL(S) AND TRANSPARENT TARGETING
- SUPPORTIVE & BIPARTISAN POLITICAL WILL & CHAMPIONS
- SOLID FINANCIAL BASE; “RING-FENCED” LINE BUDGET LINE ITEM
- **MEANINGFUL (WIN/WIN) INVOLVEMENT OF STAKEHOLDER PARTNERS THROUGHOUT THE PROGRAM**
 - **STUDENTS, PARENTS, COMMUNITY**
 - **FARMERS, COOKS/CATERERS, TRANSPORTERS, ALLIED BUSINESSES, CIVIL SOCIETY**
 - **ACADEMIA, RESEARCHERS, TECHNICAL EXPERTS**
 - **LOCAL, DISTRICT, STATE/PROVINCE, NATIONAL, AND—IF NEEDED—INTERNATIONAL PARTNERS**
- QUALITY STANDARDS THAT ARE RESPECTED AND ENFORCED
- EFFECTIVE WATCHDOG OPTIONS & MECHANISMS TO FIX WASTE, FRAUD, ABUSE, MISMANAGEMENT, ETC.
- PASSIONATE LEADERSHIP

SOME EXAMPLES OF SUSTAINED SCHOOL MEAL PROGRAMS

EACH HAS INVOLVED A UNIQUE SET OF PARTNERSHIPS THAT EVOLVED OVER

UK

JAPAN

THAILAND

URUGUAY

FINLAND

BOTSWANA

BRAZIL

SCOTLAND

CABO VERDE

USA

ITALY

COTE D'IVOIRE

SOUTH AFRICA

INDIA

SOUTH KOREA



THANK YOU!



info@gcnf.org

